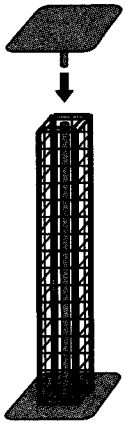


□ Corner Component Tips:

- Attach four QuikFrame Corner pieces, with a base plate, into a square to make a strong, yet narrow pedestal.

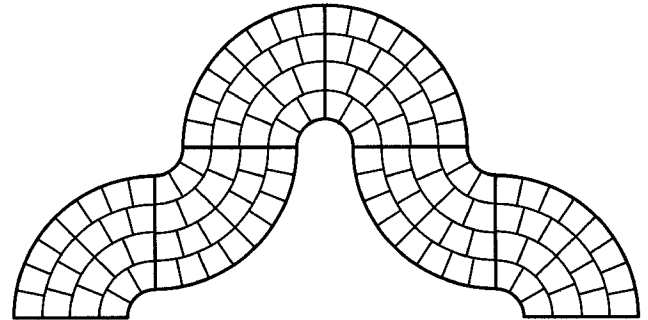
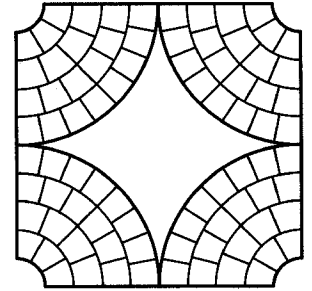
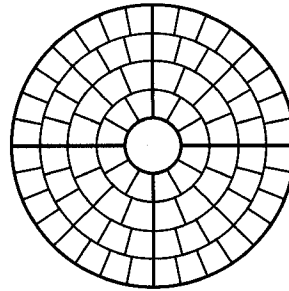
Optional: Use a second base plate on top of pedestal for a stable display surface.



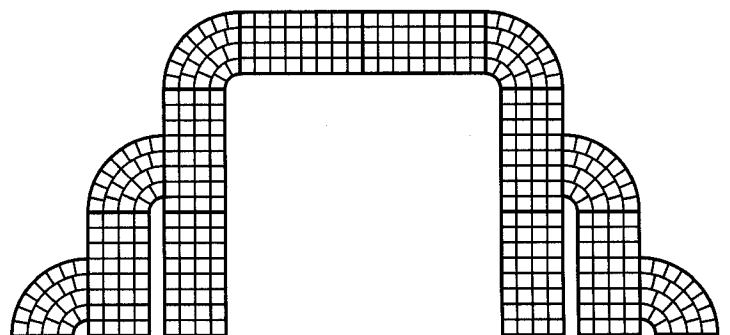
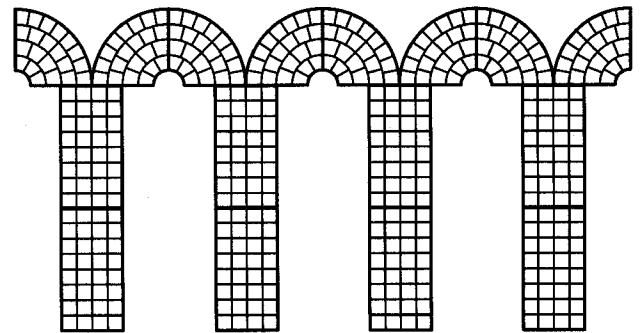
- Use corner components to support J-hooks for trade show and bridal fair booths.
- The corner component is ideal for use in high-traffic areas, such as trade shows, to soften the edges on perfect square configurations.

□ Radius Component Tips:

- To create a perfect circle, attach four QuikFrame Radius pieces together and insert a 16" (40cm) Round latex into the center opening. Turn the Radius components to form a square or frame.



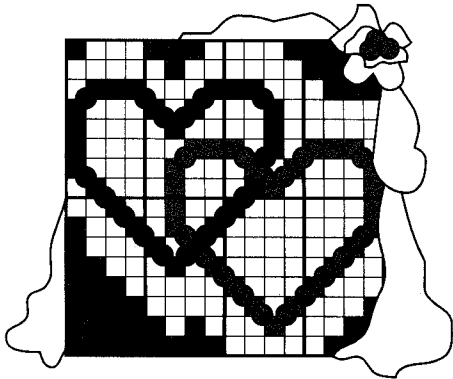
- QuikFrame Radius components work well alone or with standard QuikFrame panels to create graceful room dividers, stage or photo backdrops, and dramatic entryways.



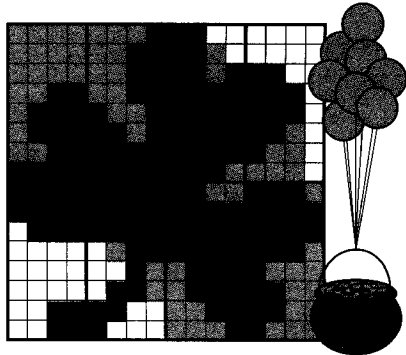
□ SDS QuikFrame Displays

Following are seasonal display ideas using basic SDS wall constructions. Sell these displays to clients such as malls and hotels, and use them in your own store window to entice customers to come into your store.

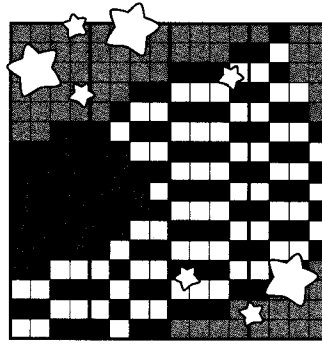
Jazz up your displays even more by adding seasonal bouquets and other coordinating items, such as gift boxes adorned with balloon bows for Christmas, boxes of candy for Valentine's Day, and bales of hay for Halloween.



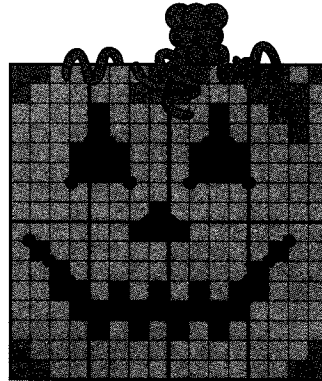
Draped fabric adds elegance to this interlocking hearts backdrop. Round balloons added on top of the SDS panels help complete the design.



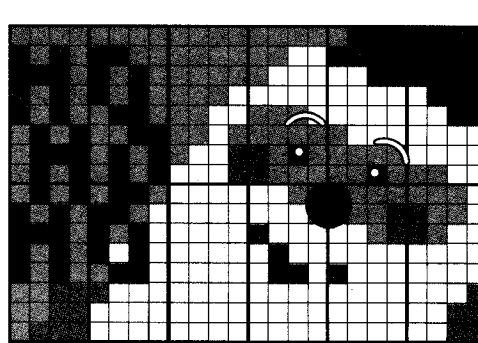
You're sure to bring some luck with this St. Patrick's Day idea. Add a pot of gold to accent the wall.



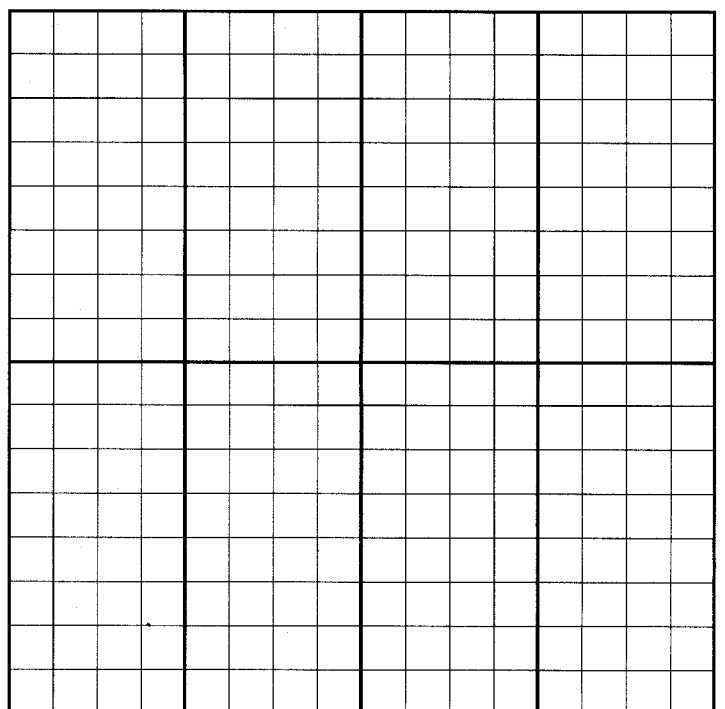
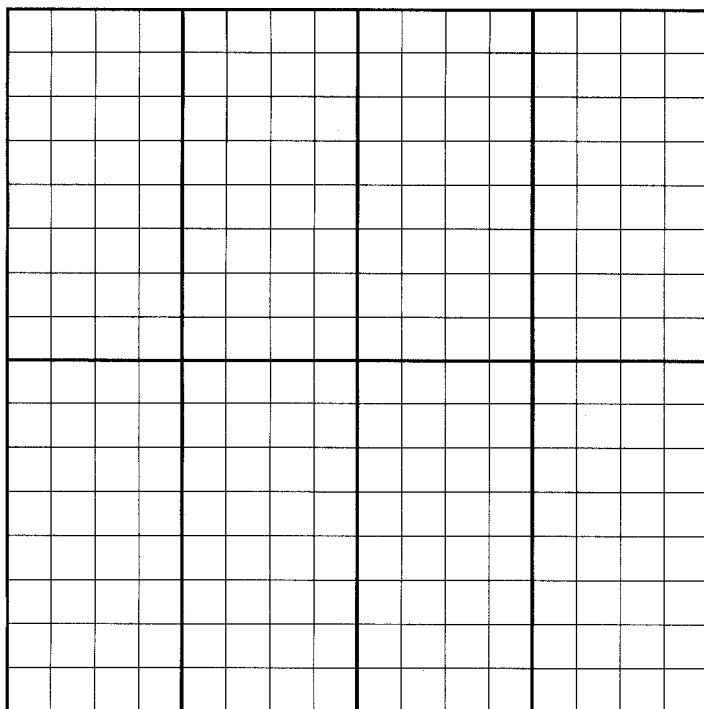
Add Microfoil stars to the front of the SDS panels to add sparkle to this patriotic display.



Top off a cheerful Jack-o-lantern with a stem made from a traditional latex column and curled 260Qs, for a special Halloween treat.



Deck the halls, malls, and more with this jolly Santa.



Now it's your turn! Copy these wall templates and create your own exciting SDS displays.